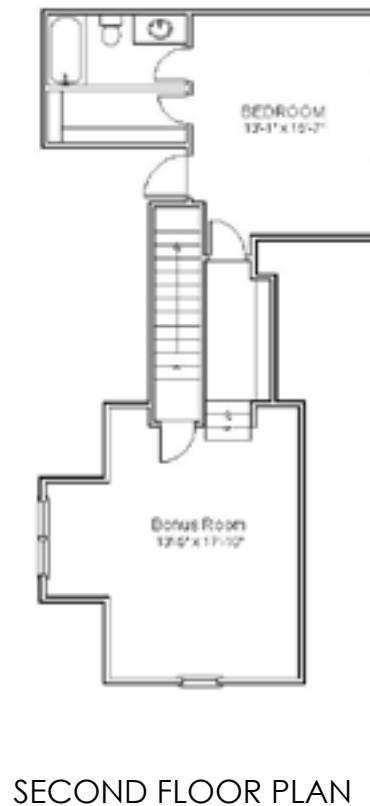
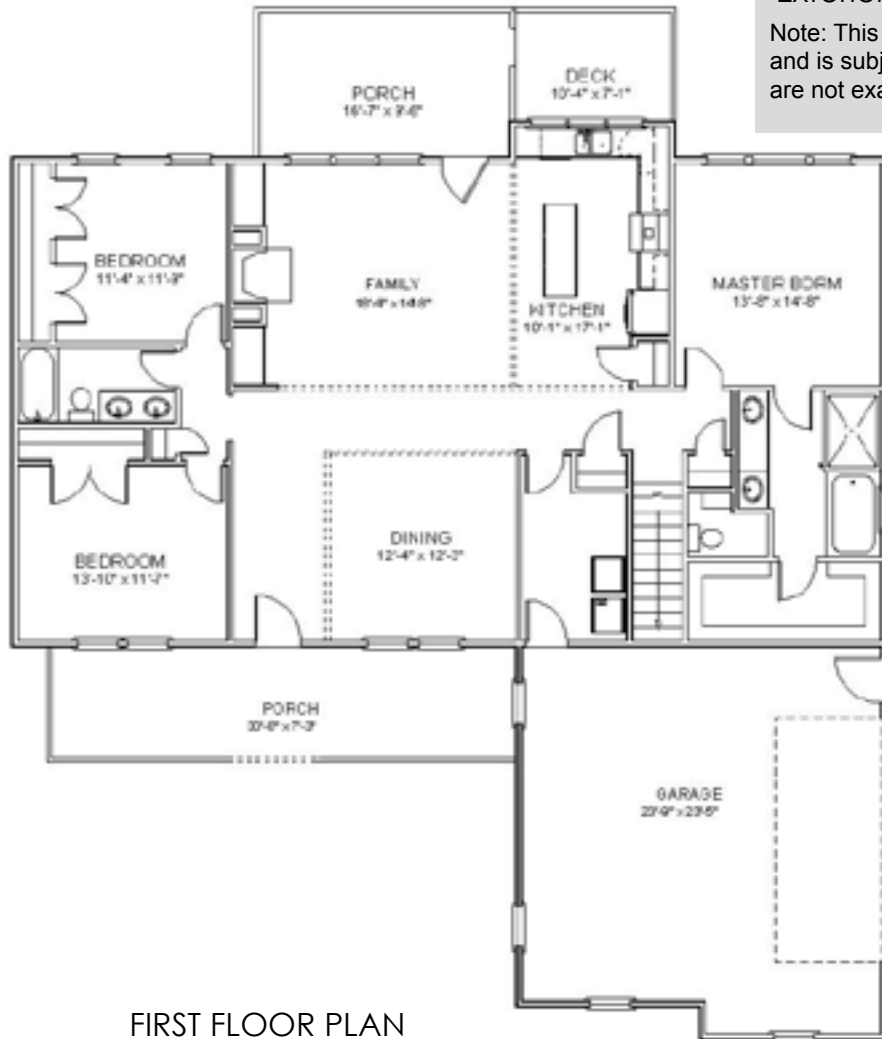


The Sandpiper

First Floor - 1910
Bonus Room - 384
Bedroom 4 - 342
Garage - 617
Exterior - 58'-0W x 70'6L

Note: This floor plan is for illustration purposes only and is subject to changes and revisions. Demensions are not exact and are subject to change.



2636 total heated square feet

Open floor plan, 4 bedroom, 3 baths, family room, dining room, pantry, split bedrooms, rec room, two-car garage and much more.

